



**Chiline** CATCH  
SYSTEM

**Prevention is Key:  
Early Circulating Tumor Cells  
(CTC) Detection Made Easy**

Empowering You for a Healthier Future

**Convenient  
Blood Sample**

Requires only a  
small amount of  
blood for testing

**First Negative  
Selection Technology  
in Malaysia**

Advanced method for  
precise early detection

**Fast & Accurate  
Results**

90% sensitivity and  
94% specificity with  
24-hour reporting

**Cancer Screening**  
**Do I have cancer?**

Detects circulating tumor cells (CTC) in early-stage cancer.



**Why Choose**



Detecting Circulating Tumor Cells in the Earliest Stage



**Treatment Monitoring**  
**Am I recovering well?**

Measures CTC levels to track therapy effectiveness.



**Cancer Recurrence**  
**Is my cancer coming back?**

Helps detect recurrence before symptoms appear.

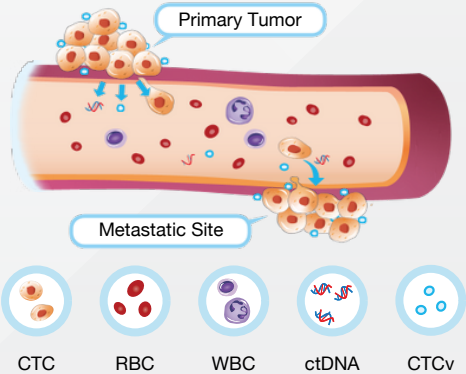


**Detects 21 Common Cancers**  
**How many types of cancer?**

Uses epithelial cancer marker to detect 21 types of most common cancer.

**What is *Circulating Tumor Cells (CTC)*?**

Circulating tumor cells (CTC) are cancer cells that break away from a tumor and enter the bloodstream. While CTC are often associated with malignant tumor, research advances are revealing their potential role in early detection and monitoring.



**Why Should You Care?**

Understanding CTC can empower you to take charge of your health and make informed decisions about cancer screening and prevention.

**ChilineCATCH system helps you to *detect cancer cells earlier!***

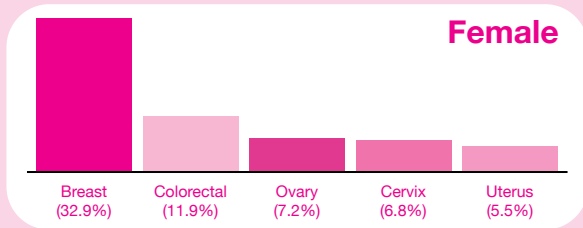
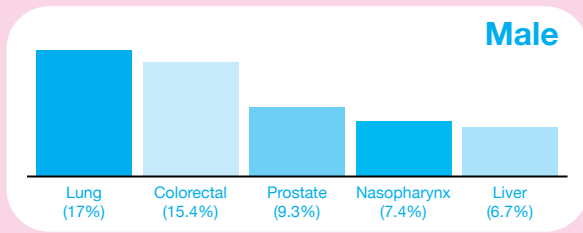
Staging	Stage 0	Stage I	Stage II	Stage III	Stage IV
Tumor size	0.1 cm	0.5 cm	1 cm	distant metastasis	
Detection methods	Blood test for CTC detection		CT MRI PET	Tumor markers X-ray Colonoscopy	

# The *Rising Cancer Risk* in Malaysia

**1** in 10 Malaysians will be diagnosed with cancer in their lifetime

Total cancer cases in Malaysia are expected to double by

**2040**



Five Most Frequent Cancers by Gender in Malaysia

## Why *Early Cancer Detection Matters?*

### Reduce Aggressive Treatments

- ✗ Treatments chemotherapy, surgery or radiation may be needed
- ✗ Higher Risk of Cancer Spreading
- ✗ Longer Recovery Time
- ✗ Greater Emotional & Financial Strain

### Higher Survival, Lower Costs

- ✓ Simpler & more effective treatment
- ✓ Higher survival rates
- ✓ Lower medical expenses
- ✓ Less Impact on Daily Life

## Survival by Cancer Type and Stage of Diagnosis

Cancer Type	Early Stage (Stage 1)	Last Stage (Stage 4)
Female breast	87.5%	23.3%
Colorectal	75.8%	17.3%
Lung, trachea and bronchus	37.1%	6.3%
Nasopharyngeal	63.7%	26.9%
Liver	20.4%	9.2%

# TOP 5 most common cancers in Malaysia are:



Breast Cancer



Colorectal (colon) cancer



Liver Cancer



Lung Cancer



Nasopharyngeal cancer

<https://gleneagles.com.my/medical-specialties/oncology/cancer-statistics-malaysia>



## Limitations of the Current Cancer Detection Methods



### Common Blood Tests (Tumor Markers)

Low accuracy, Detects late-stage cancer, can give false positives or negatives.



### Imaging (MRI, CT Scans, X-rays)

Detects only when tumors are large enough, high radiation exposure.



### Biopsies (Surgical tissue removal)

Invasive, painful, time-consuming, with sampling limitations.

## ChilineCATCH can detect 21 Types of Cancers

Anal Cancer

Breast Cancer

Gallbladder Cancer

Liver Cancer

Pancreatic Cancer

Stomach Cancer

Tracheal, Bronchial or Lung Cancer

Bile Duct Cancer

Cervical Cancer

Kidney Cancer

Oral Cancer

Prostate Cancer

Thyroid Cancer

Rectal and Colon Cancer

Bladder Cancer

Esophageal Cancer

Laryngeal Cancer

Ovarian Cancer

Skin Cancer

Urothelial Carcinoma

Nasopharyngeal Carcinoma

# Real Patients, *Real Results of CTC users*

A higher level of CTC may indicate the presence of cancer or the potential to develop cancer and usually requires further investigation.

Patients	Sex	Age	Smoking Status (PY)	Year of CTC Detection (Study Entry)	CTC	Year of Lung Cancer Diagnosis	Lung Cancer Size (cm)
P1	M	54	60	2009	43	2012	1.9
P2	F	48	45	2009	67	2010	1.5
P3	M	47	35	2008	32	2012	1.4
P4	M	52	45	2009	19	2013	2
P5	M	63	55	2009	28	2013	1.5

The five COPD patients with CTC detected by cytopathology analysis after blood-enrichment at baseline developed a lung cancer that was diagnosed at follow-up (Table 2). A CT-scan performed at the same time as the blood filtration confirmed the diagnosis of COPD but failed to show lung nodules. Furthermore, these patients had annual surveillance using low-dose spiral CT. After a mean follow-up of 3.2 years (range 1 to 4 years) the surveillance CT scan program revealed lung nodules.

## *Endorsed* by leading hospitals and healthcare providers



## *Empower Yourself with Knowledge*

*Knowledge is power - early detection can save lives.  
Stay informed about circulating tumor cells (CTC) and  
talk to your doctor about proactive screening. A simple  
blood test can make all the difference.*

## **Our Commitment to Excellence**



*Take the First Step Toward Better Health!  
Contact us today to learn more  
or to book your CTC test.*



**CELTECH CTC Sdn Bhd (1570235-M)**

**Address** : Bangunan Electcoms, 12A, Jalan 13/4,  
Seksyen 13, 46200 Petaling Jaya,  
Selangor D.E. Malaysia.

**Hotline** : +03-7959 7628

**email** : admin@celtech2u.com.my